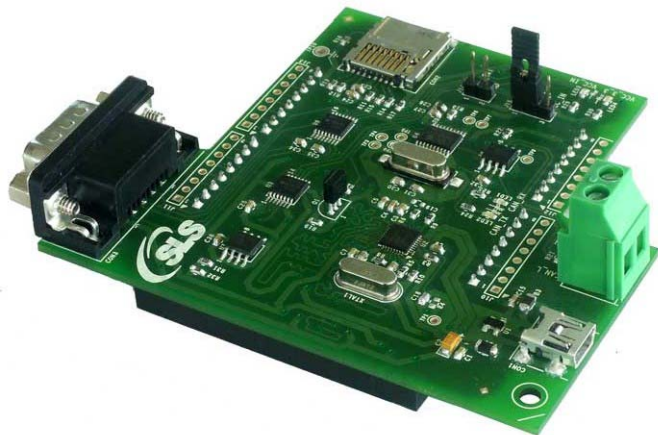


Add On Board

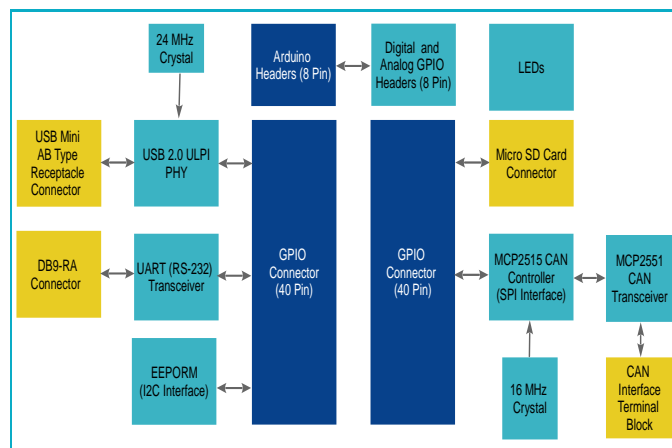
MAX10 Evaluation Kit Add On

The MAX10 Evaluation Kit Add On board designed to be snapped on Altera's MAX10 FPGA Evaluation Kit. The board comes with various interfaces such as, USB 2.0, Micro SD card, UART, CAN, I2C PROM and general purpose IOs.

This board is specifically designed with intent to provide ready made solution of USB, SPI, I2C, UART and SD card for Altera's MAX10 FPGA Evaluation Kit. This board provides an embedded platform for exploring MAX10 capabilities and features.



Block Diagram

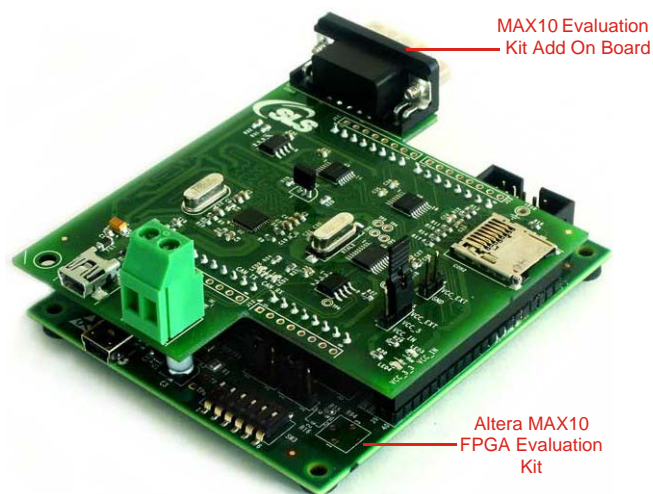


Board Features

- USB 2.0 Interface using RN1133 ULPI PHY
- Micro SD Card Connector
- UART Interface
- CAN Interface
- I2C PROM
- Indication LEDs
- 8 Pin Digital and Analog GPIO Headers
- Standard 40 Pin GPIO Connector

Application Example:

The following example shows the MAX10 Evaluation Kit Add On board connection with Altera MAX10 FPGA Evaluation Kit.



Deliverables

- MAX10 Evaluation Kit Add On Board
- USB 2.0 Cable
- 2GB Micro SD Card
- Board CD
 - IP Cores
 - Reference Designs
 - Board Reference Manual

The board works seamlessly with the following SLS IP Cores. Download the IP Cores from:

- **USB 2.0 Device:** <http://slscorp.com/ip-cores/communication/usb-20-device.html>
- **USB 2.0 Host:** <http://slscorp.com/ip-cores/communication/usb-20-host.html>
- **USB 2.0 OTG** <http://www.slscorp.com/ip-cores/communication/usb-2-0-on-the-go-usb20otg.html>
- **SD/eMMC Host Controller** <http://www.slscorp.com/ip-cores/memory/sd-emmc-host-controller.html>

For more information on Max10 Evaluation Kit Add On board, visit <http://www.slscorp.com/products/add-on-boards/max10-evaluation-kit-add-on.html>