

USB200TG IP Core Setup

Installation Guide



System Level Solutions, Inc. (USA)
14100 Murphy Avenue
San Martin, CA 95046
(408) 852 - 0067

<http://www.slscorp.com>

IP CoreVersion: 1.0
Document Version: 1.0
Document Date: May 2015

Introduction

This installation guide familiarizes you with the contents of the USB200TG IP Core setup.

Table below shows the revision history of the installation guide.

Version	Date	Description
1.0	May 2015	First release

How to Contact SLS

For the most up-to-date information about SLS products, go to the SLS worldwide website at <http://www.slscorp.com>. For additional information about SLS products, consult the source shown below.

Information Type	E-mail
Product literature services, SLS literature services, Non-technical customer services, Technical support.	support@slscorp.com

<i>About this Guide</i>	<i>ii</i>
Introduction	ii
How to Contact SLS	ii
Software Installation	1
Installing USB20OTG IP Core	1
Step1: Preparing to Install.....	1
Step2: Welcome to the SLS USB20OTG IP Installation Wizard.....	2
Step3: License Agreement	2
Step4: Choosing Destination Location	3
Step5: Start Copying the Program Files	4
Step6: License Information.....	5
Step7: Finish Installation	5
Step8: SLS USB20OTG ReadMe.....	6

This Installation Steps guides the user through the installation process of SLS USB20OTG IP Core.



We assume that following software are installed on your pc.

- Windows XP, 7, 8
- Quartus II 13.0 SPI, Nios II EDS 13.0 SPI

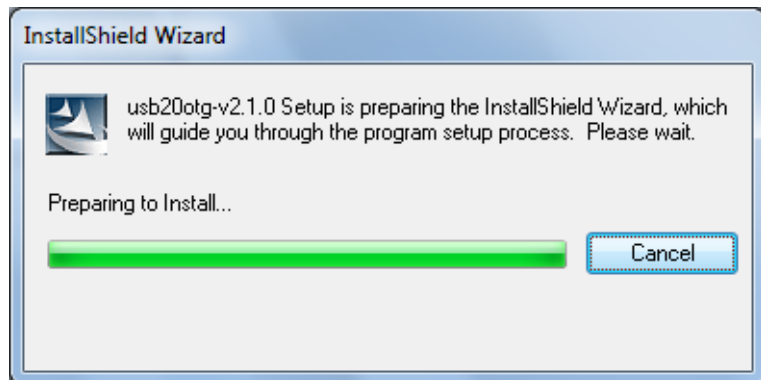
Installing USB20OTG IP Core

The USB20OTG IP Core is provided as a setup for using it in various designs. Following steps shows the installation procedure for the IP Core setup file on your system.

Step1: Preparing to Install

Double click on the **usb20otg-v<IP Core Setup version #>.exe** file. The setup preparation window appears as shown in [Figure- 1](#).

Figure -1. InstallShield Wizard

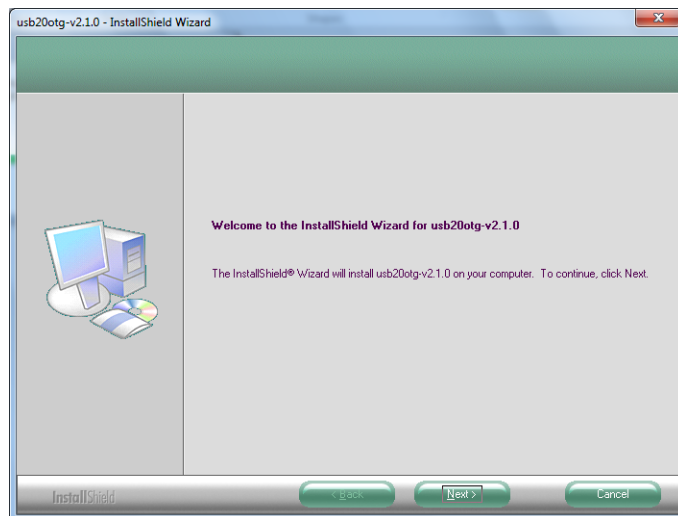


Step2: Welcome to the SLS USB20OTG IP Installation Wizard

Then the next window appears showing the message, '**Welcome to the SLS usb20otg-v<IP Core Setup version #> Installshield Wizard**'. See [Figure- 2](#). There are three options available, '**Back**', '**Next**' and '**Cancel**'. Choose the correct option as per the requirement.

1. Choose '**Back**' to go to previous window.
2. Choose '**Next**' to continue the installation.
3. Choose '**Cancel**' to end the installation setup. Selecting this option, pops up a message window having options, '**Yes**' and '**No**'.
 - To continue the installation choose '**No**'.
 - To exit setup choose '**Yes**'.

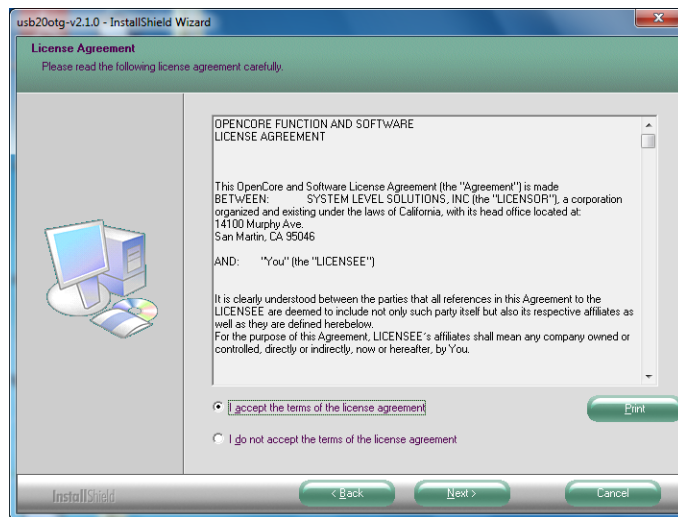
Figure -2. Welcome Screen



Step3: License Agreement

On choosing **Next**, the setup will show the "**License Agreement**". Read it and accept in order to continue with setup. Select "**I accept the terms of license agreement**" option and choose **Next** to continue the installation as shown in [Figure- 3](#).

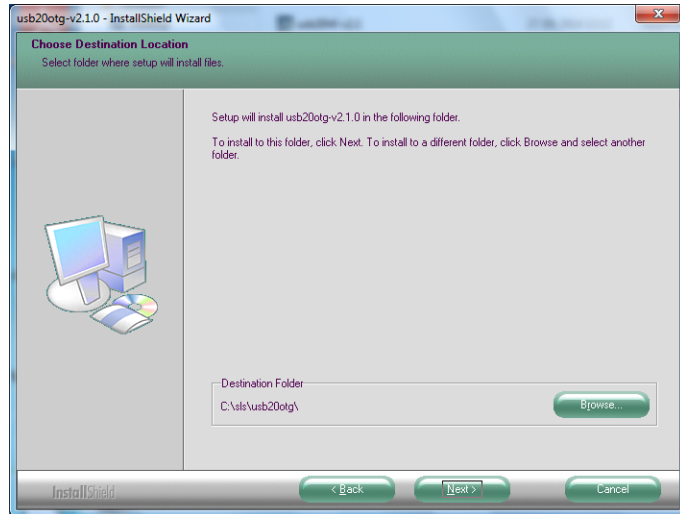
Figure -3. License Agreement



Step4: Choosing Destination Location

The “**Choose Destination Location**” window appears asking the installation directory for USB20OTG IP Core. See [Figure- 4](#). For installing to a different folder, click “**Browse**” button. Choose ‘**Next**’ to continue the installation.

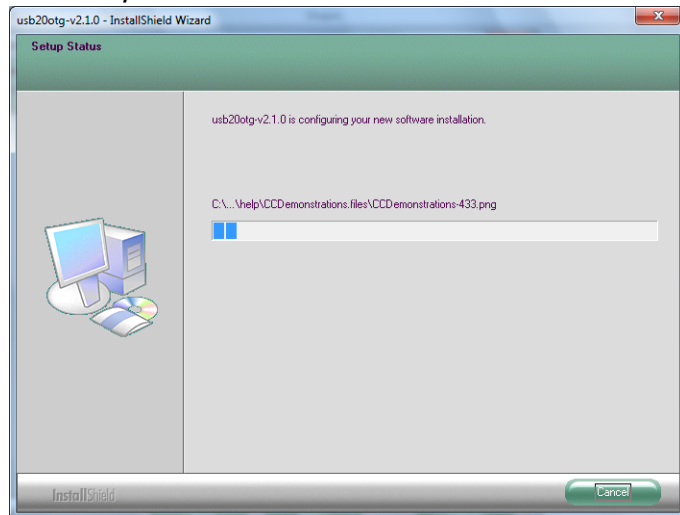
Figure -4. Choose Destination Location



Step5: Start Copying the Program Files

It starts copying the IP Core files to the directory selected. See [Figure- 5](#).

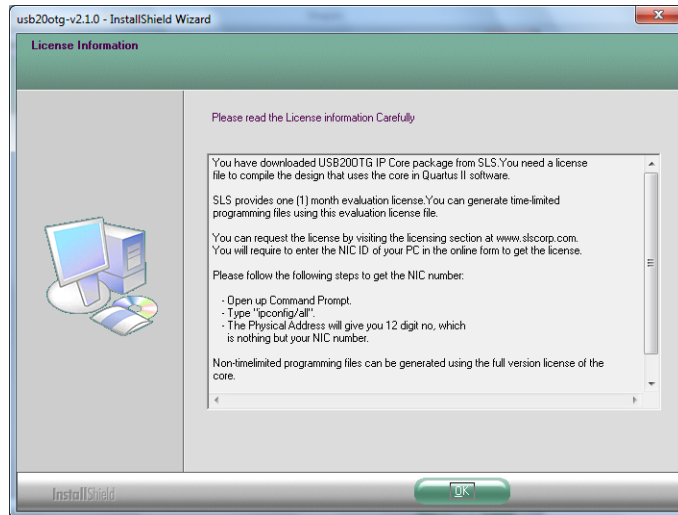
Figure -5. Setup Status



Step6: License Information

After copying the files, the “**License Information**” window explaining the steps to request the license for IP Core. See [Figure- 6](#). Choose ‘**OK**’ to go to finish window.

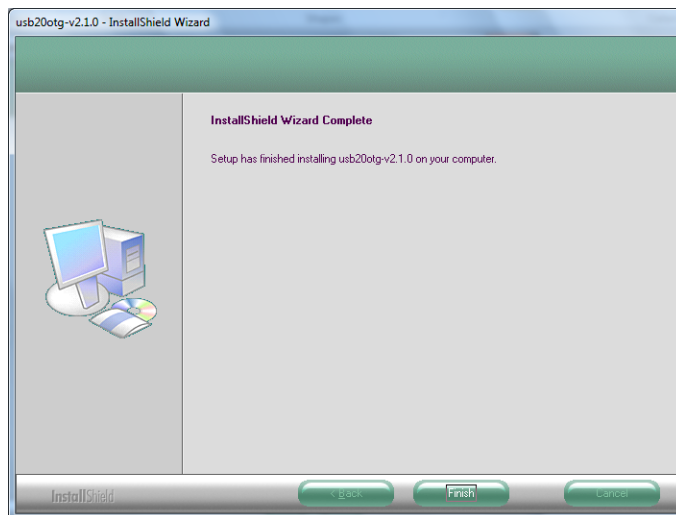
Figure -6. License Information



Step7: Finish Installation

As the installation completes, last window will appear as shown in [Figure- 7](#). Choose ‘**Finish**’ to exit from the installation window.

Figure -7. InstallShield Wizard Complete



Step8: SLS USB20OTG ReadMe

After successful installation of the SLS USB20OTG IP Core, it opens the ReadMe file as shown in [Figure- 8](#).

Figure 8. SLS USB200TG IP Core After Installation



Home
[Directory Structure & Contents](#)
[Reference Designs](#)
[Demonstrations](#)
[Documents](#)
[License](#)
[Release Notes](#)
[Contact us](#)

USB 2.0 OTG ReadMe

This readme file contains following information:

- [Directory Structure and Contents](#)
- [Reference Designs](#)
- [Demonstrations](#)
- [Documents](#)
- [License](#)
- [Release Notes](#)
- [Contact us](#)

Notes:

- The IP Core set up will work as documented for Quartus II software version 13.0 and above.
- The IP Core, if not installed in the directory same as Quartus II installation directory, the IP Core component path will have to be given manually in Qsys.

Copyright © 2014, System Level Solutions (I) Pvt. Ltd, All rights reserved




To verify the proper installation of USB200TG IP core, make sure that the installed IP Core directory structure is same as the directory structure specified in the ReadMe file.

Table 1 lists the USB200TG IP Core installation directory content and their description. The default Windows installation directory is **c:\sls**.

<i>Table 1. Installed Directory Contents</i>	
Directory Name	Description of Contents
documents	Contains USB200TG User Guide, Host BFM VIP User Guide and readme help files.
embedded	Contains object files of Linux based USB200TG drivers and respective supported sample files.
linux driver	Contains object files of gadget, host and otg (transceiver) Linux based USB200TG drivers.
sample_files	Contains sample files of gadget, host, otg (transceiver) and platform.c used to make configuration settings.
readme.txt	Contains steps to configure Linux drivers with Linux kernel.
hardware	Contains encrypted USB200TG IP Core design files, demonstrations and reference designs.

Table 1. Installed Directory Contents

Directory Name	Description of Contents
demo	Contains a demo to enumerate the attached USB device.
ref_design	Contains ready to use reference designs for USB20OTG IP core. Qsys reference design for CorCommander Development Board (r2a).
simulation.zip	 This compressed folder contains simulation environment. You need to unzip this.
startup.bat	Contains files for simulation which includes simulation libraries, simulation setting, test benches of USB test cases and USB transfer tests.
readme.txt	Batch file to run the simulation.
software	Contains steps for Simulation.
driver	Contains SLSUSB driver files for Windows.
example	Contains SLSUSB drivers files for windows (system files, *.sys & INF files).
	Contains example application to test SLSUSB supported devices.