

USB11SR IP Core Setup

Installation Guide



System Level Solutions, Inc. (USA)
14100 Murphy Avenue
San Martin, CA 95046
(408) 852 - 0067

<http://www.slscorp.com>

IP Core Version: 1.0
Document Version: 1.0
Document Date: June 2015

Introduction

This installation guide familiarizes you with the contents of the USB11SR IP Core setup.

Table below shows the revision history of the installation guide.

Version	Date	Description
1.0	June 2015	First release

How to Contact SLS

For the most up-to-date information about SLS products, go to the SLS worldwide website at <http://www.slscorp.com>. For additional information about SLS products, consult the source shown below.

Information Type	E-mail
Product literature services, SLS literature services, Non-technical customer services, Technical support.	support@slscorp.com

<i>About this Guide</i>	<i>ii</i>
Introduction	ii
How to Contact SLS	ii
 Software Installation	 1
Installing USB11SR IP Core	1
Step1: Preparing to Install	1
Step2: Welcome to the SLS USB11SR IP Installation Wizard	1
Step3: License Agreement	2
Step4: Choosing Destination Location	3
Step5: Start Copying the Program Files	4
Step5: License Information	5
Step6: Finish Installation	5
Step7: SLS USB11SR ReadMe	6

Installing USB11SR IP Core

This Installation Steps guides the user through the installation process of SLS USB11SR IP Core.



We assume that following software are installed on your pc.

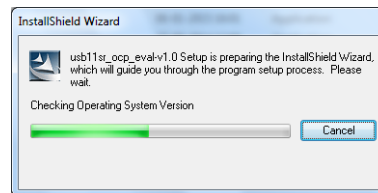
- Windows 2000/XP
- Quartus II 9.1 or higher, Nios II EDS 9.1 or higher

The USB11SR IP Core is provided as a setup for using it in various designs. Following steps shows the installation procedure for the IP Core setup file on your system.

Step1: Preparing to Install

Double click on the **usb11sr_ocp_eval-v<IP Core Setup version#>.exe** file. It displays the message as shown in [Figure- 1](#).

Figure -1. Install SLS USB11SR



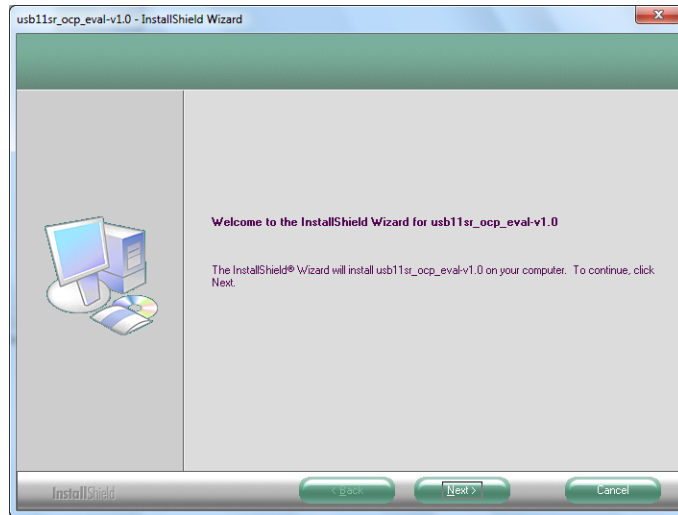
Step2: Welcome to the SLS USB11SR IP Installation Wizard

Then the next window appears showing the message, **‘Welcome to the Installshield Wizard for usb11sr_ocp_eval-v<IP Core Setup version#>’** appears as shown in [Figure- 2](#). There are two options available, **‘Next’** and **‘Cancel’**. Choose the correct option as per the requirement.

1. Choose **‘Next’** to continue the installation.

2. Choose **'Cancel'** to end the setup for installation. Selecting this option pops up a message window having options, **'Yes'** and **'No'**.
 - To continue the installation choose **'No'**.
 - To exit setup choose **'Yes'**.

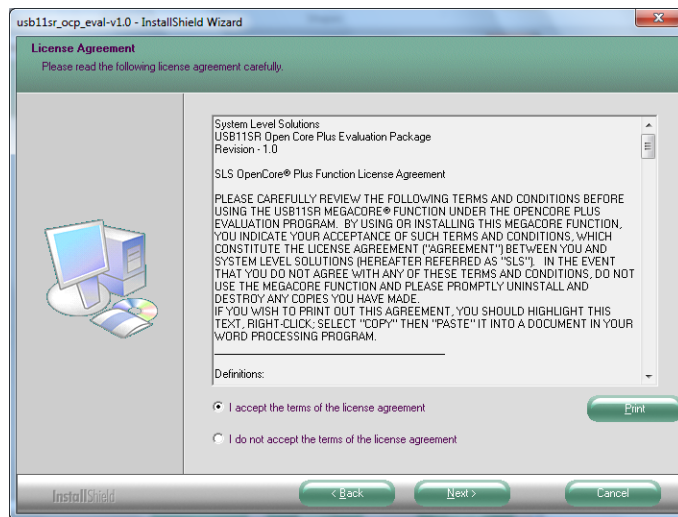
Figure -2. Welcome SLS USB11SR IP Setup Wizard



Step3: License Agreement

The setup shows a **“License Agreement”** window. Accept the agreement in order to continue with setup. Select **“I accept the terms of license agreement”** option after reading the License terms as shown in [Figure- 3](#).

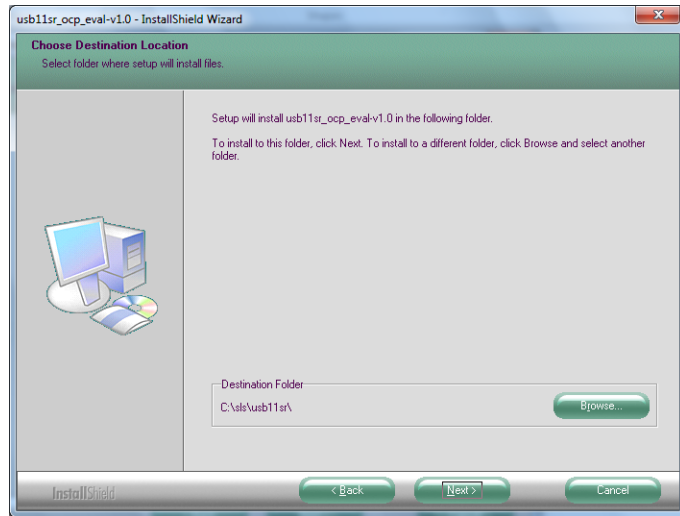
Figure -3. License Agreement



Step4: Choosing Destination Location

The “**Choose Destination Location**” window appears asking the installation directory for USB11SR IP Core. See [Figure- 4](#). For installing to a different folder, click “**Browse**” button. Choose ‘**Next**’ to continue the setup.

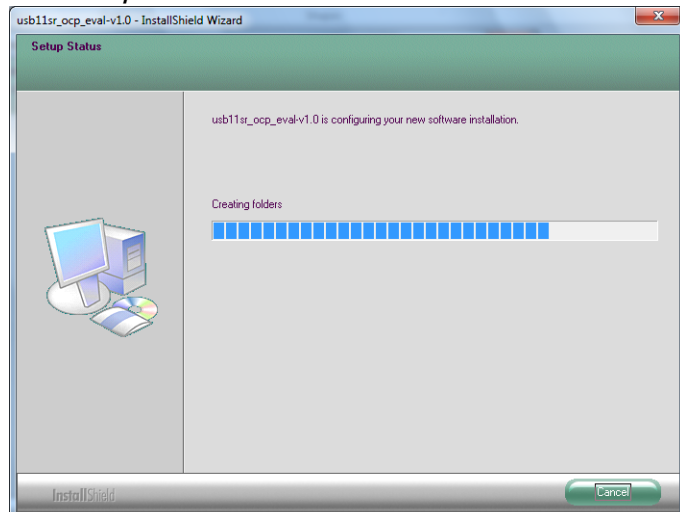
Figure -4. Choose Destination Location



Step5: Start Copying the Program Files

It starts copying the IP Core files to the directory selected. See [Figure- 5](#).

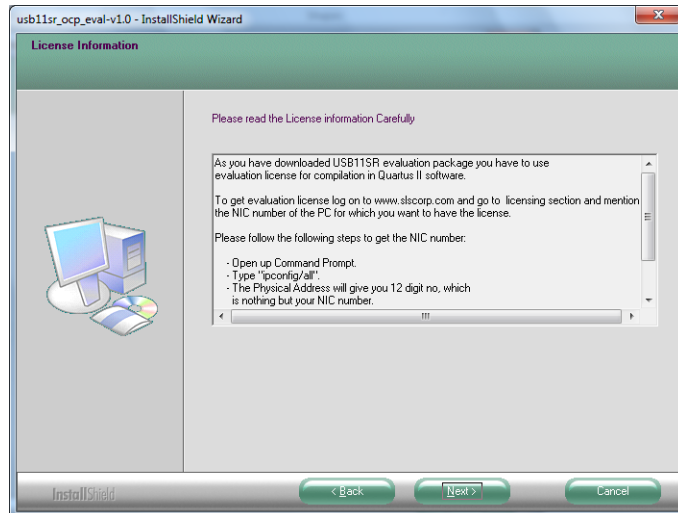
Figure -5. Setup Status



Step5: License Information

After copying the files, the “**License Information**” window explaining the steps to request the license for IP Core. See [Figure- 6](#). Choose ‘**Next**’ to go to finish window.

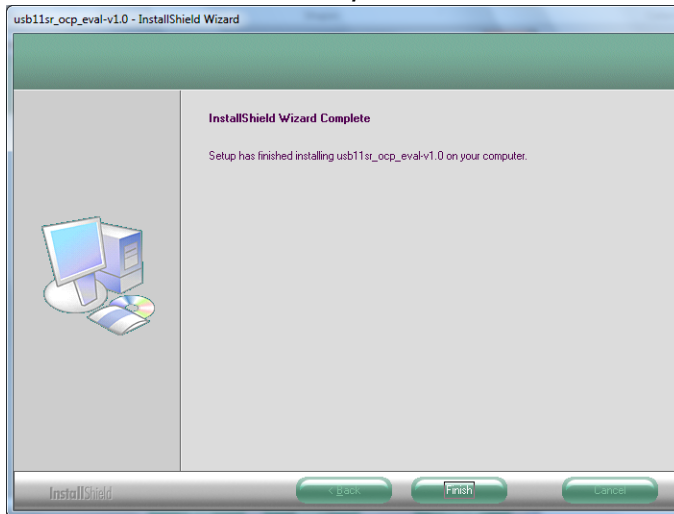
Figure -6. License Information



Step6: Finish Installation

As the installation completes, last window will appear as shown in [Figure- 7](#). Choose ‘**Finish**’ to exit from the installation window.

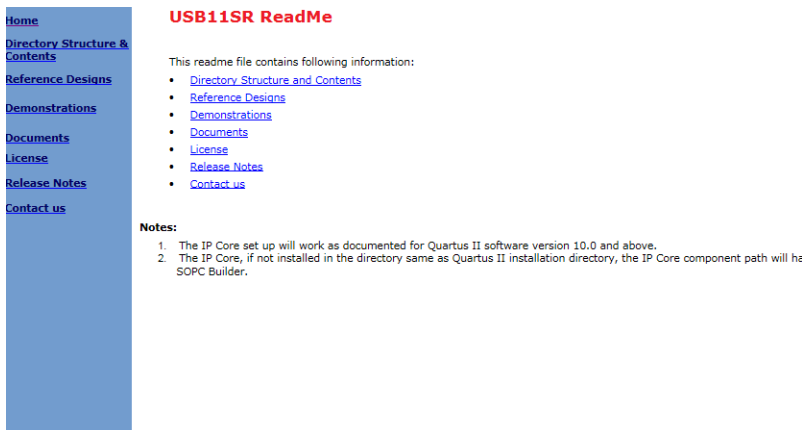
Figure -7. InstallShield Wizard Complete



Step7: SLS USB11SR ReadMe

After successful installation of the SLS USB11SR IP Core, it opens the ReadMe file. See [Figure- 8](#).

Figure 8. SLS USB11SR IP Core After Installation





To verify the proper installation of USB11SR IP core, make sure that the installed IP Core directory structure is same as the directory structure specified in the ReadMe file.

[Table 1](#) lists USB11SR installation directory content and their description. The default Windows installation directory is `c:\sls`.

Directory Name	Description of Contents
documents	Contains USB11SR User Guide, Tutorial, Windows 32 API User Guide, Nios II HAL API User Guide and readme help files.
embedded	Contains sample source files for applications with Nios II.
example	Contains Nios II source files. Nios II includes sample source files for Portinterface application and Streaming.
lib	Contains software library files and register header files.
hardware	Contains encrypted USB11SR IP Core design files, demonstrations files using the core, ready to use reference designs for the core and precompiled library for simulation.
demo	Contains USB11SR demonstration files which includes streaming (Bulk IN/ Out), CDC Serial, Port Interface and Mass Storage demonstrations files .
ref_design	Contains USB11SR IP Core ready to use reference designs of ESDK Board for Cyclone(1C12).
software	Contains SLSUSB driver files for windows and linux with application examples.
driver	Contains SLSUSB driver for Linux as well as Windows.
example	Contains USB11SR examples for Linux and Windows.
library	Contains USB11SR software libraries .h header file, .lib(library file) and .dll for VC++ programming.
utilities	Contains USB11sr utilities for portinterface and usbview applications for windows 2000/XP.