

SD/eMMC Host Controller IP Core Setup

Installation Guide



System Level Solutions, Inc. (USA)
14100 Murphy Avenue
San Martin, CA 95046
(408) 852 - 0067

<http://www.slscorp.com>

IP Core Version: 3.0
Document Version: 1.0
Document Date: May 2015

Introduction

This installation guide familiarizes you with the contents of the SD/eMMC Host Controller IP Core setup.

Table below shows the revision history of the installation guide.

Version	Date	Description
1.0	May 2015	First release

How to Contact SLS

For the most up-to-date information about SLS products, go to the SLS worldwide website at <http://www.slscorp.com>. For additional information about SLS products, consult the source shown below.

Information Type	E-mail
Product literature services, SLS literature services, Non-technical customer services, Technical support.	support@slscorp.com

<i>About this Guide</i>	<i>ii</i>
Introduction	ii
How to Contact SLS	ii
Software Installation	1
Installing SD/eMMC Host Controller IP Core	1
Step1: Preparing to Install.....	1
Step2: Welcome to the SLS SD/eMMC Host Controller IP Installation Wizard	1
Step3: License Agreement	2
Step4: Choosing Destination Location	3
Step5: Start Copying the Program Files	4
Step5: License Information.....	5
Step6: Finish Installation	5
Step7: SLS SD/eMMC Host Controller ReadMe	6

Installing SD/ eMMC Host Controller IP Core

This Installation Steps guides the user through the installation process of SLS SD/eMMC Host Controller IP Core.



We assume that following software are installed on your pc.

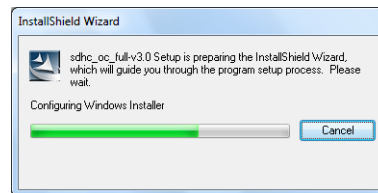
- Windows XP/Vista/7/8 32 bit or 64 bit
- Quartus II 13.1, Nios II EDS 13.1

The SD/eMMC Host Controller IP Core is provided as a setup for using it in various designs. Following steps shows the installation procedure for the IP Core setup file on your system.

Step1: Preparing to Install

Double click on the **sdhc_oc_full-v<IP Core Setup version#>.exe** file. It displays the message as shown in [Figure- 1](#).

Figure -1. Install SLS SD/eMMC Host Controller



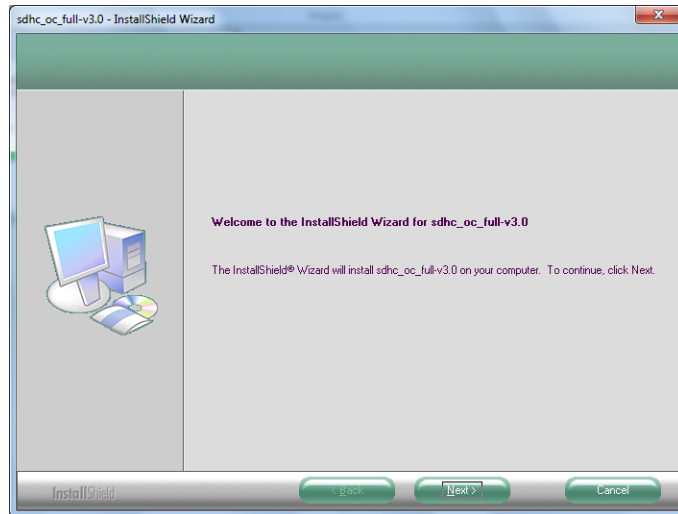
Step2: Welcome to the SLS SD/eMMC Host Controller IP Installation Wizard

Then the next window appears showing the message, **‘Welcome to the SLS sdhc_oc_full-v<IP Core Setup version#> Installshield Wizard’** appears as shown in [Figure- 2](#). There are three options available, **‘Back’**, **‘Next’** and **‘Cancel’**. Choose the correct option as per the requirement.

1. Choose **‘Back’** to go to previous window.
2. Choose **‘Next’** to continue the installation.

3. Choose **'Cancel'** to end the setup for installation. Selecting this option pops up a message window having options, **'Yes'** and **'No'**.
 - To continue the installation choose **'No'**.
 - To exit setup choose **'Yes'**.

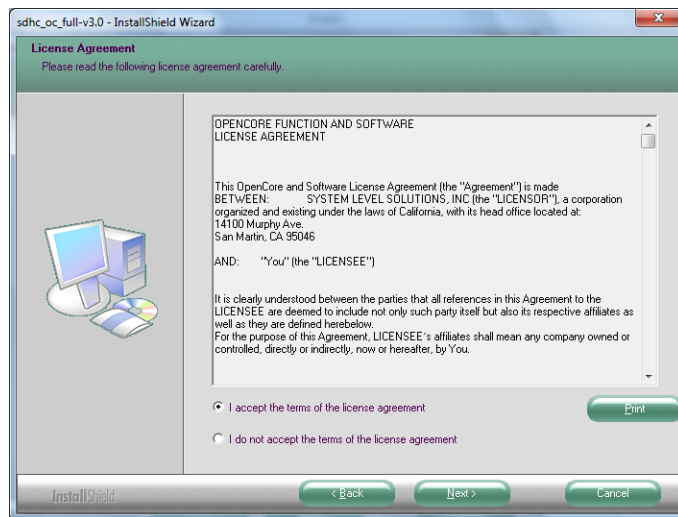
Figure -2. Welcome SLS SD/eMMC Host Controller IP Setup Wizard



Step3: License Agreement

The setup shows a **“License Agreement”** window. Accept the agreement in order to continue with setup. Select **“I accept the terms of license agreement”** option after reading the License terms as shown in [Figure- 3](#).

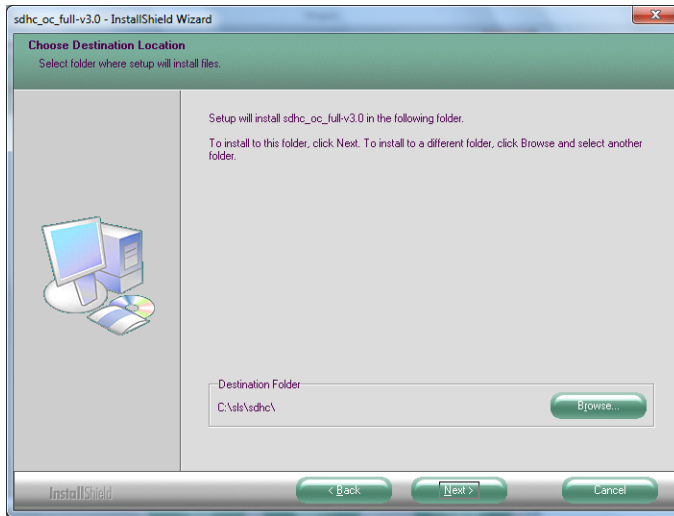
Figure -3. License Agreement



Step4: Choosing Destination Location

The “**Choose Destination Location**” window appears asking the installation directory for SD/eMMC Host Controller IP Core. See [Figure- 4](#). For installing to a different folder, click “**Browse**” button. Choose ‘**Next**’ to continue the setup.

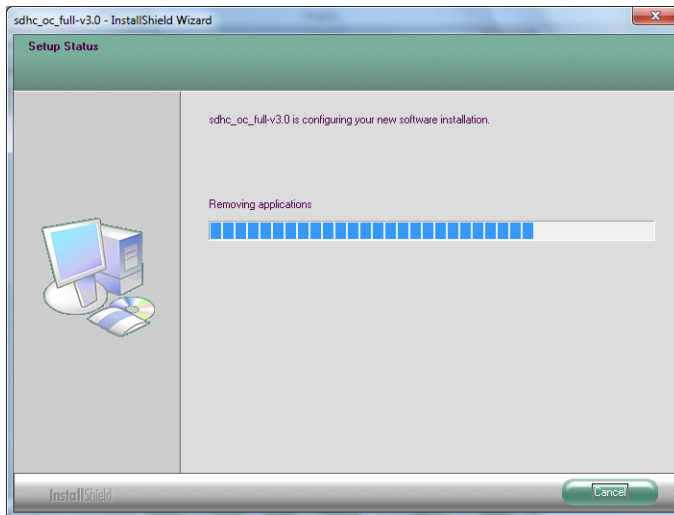
Figure -4. Choose Destination Location



Step5: Start Copying the Program Files

It starts copying the IP Core files to the directory selected. See [Figure- 5](#).

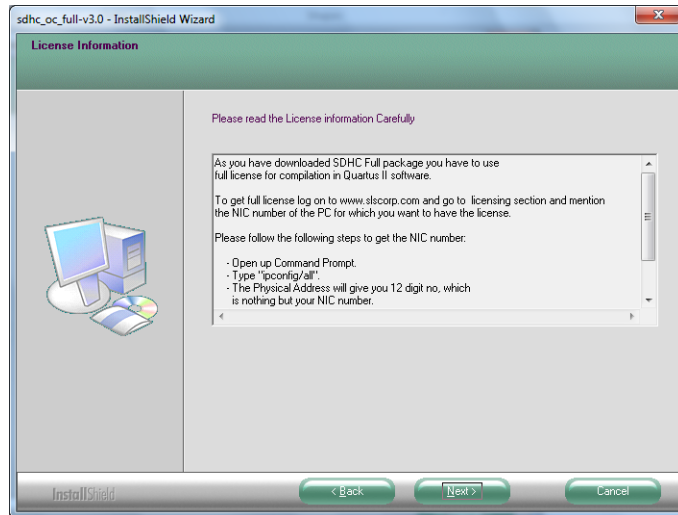
Figure -5. Setup Status



Step5: License Information

After copying the files, the “**License Information**” window explaining the steps to request the license for IP Core. See [Figure- 6](#). Choose ‘**Next**’ to go to finish window.

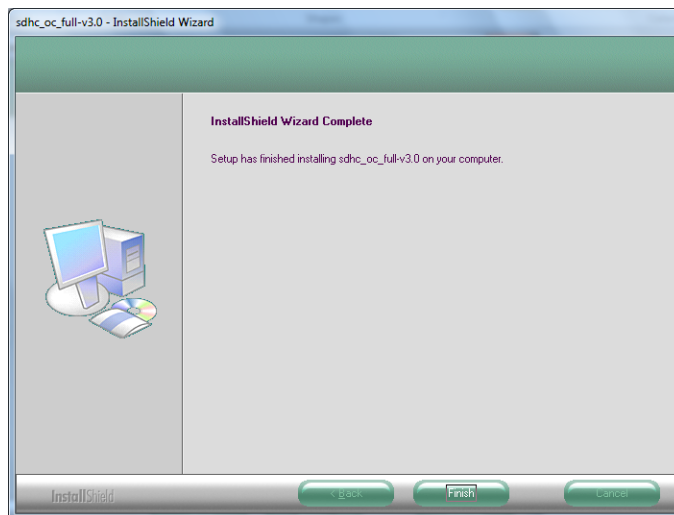
Figure -6. License Information



Step6: Finish Installation

As the installation completes, last window will appear as shown in [Figure- 7](#). Choose ‘**Finish**’ to exit from the installation window.

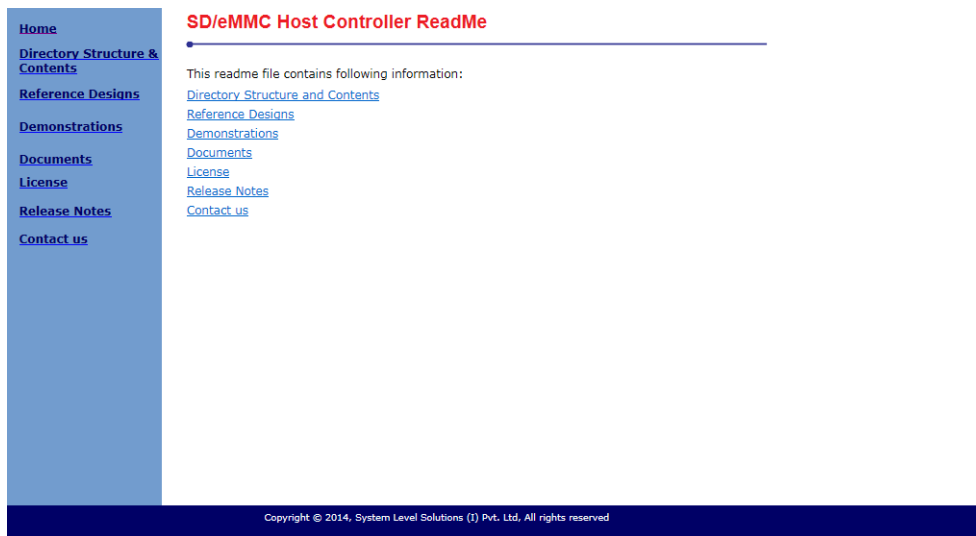
Figure -7. InstallShield Wizard Complete



Step7: SLS SD/eMMC Host Controller ReadMe

After successful installation of the SLS SD/eMMC Host Controller IP Core, it opens the ReadMe file. See [Figure- 8](#).

Figure 8. SLS SD/eMMC Host Controller IP Core After Installation



To verify the proper installation of SD/eMMC Host Controller IP core, make sure that the installed IP Core directory structure is same as the directory structure specified in the ReadMe file.

Table 1 lists SD/eMMC Host Controller IP Core installation directory content and their description. The default Windows installation directory is `c:\sls`.

Directory Name	Description of Contents
documents	Contains technical documents such as User Guide, Tutorial based on Qsys system and API User Guide for the SD/eMMC Host Controller IP Core and readme help files.
embedded	Contains sample source code and libraries for SD/eMMC Host Controller.
example	Contains example for using SD Card which includes code to mount FAT16/32 file system on the SD Memory Card.
lib	Contains library and required header files.
hardware	Contains SD/eMMC Host Controller IP Core design files, demonstrations files and ready to use reference designs.
component	Contains encrypted SD/eMMC Host Controller IP Core design files.

Table 1. Installed Directory Contents

Directory Name	Description of Contents
demo	Contains SD/eMMC Host Controller demonstration files.
ref_design	Contains SD/eMMC Host Controller IP Core reference design for CoreCommander Board (3C25 rev2a).