

I²S Controller IP Core Setup

Installation Guide



System Level Solutions, Inc. (USA)
14100 Murphy Avenue
San Martin, CA 95046
(408) 852 - 0067

<http://www.slscorp.com>

IP Core Version: 2.1
Document Version: 1.0
Document Date: May 2015

Introduction

This installation guide familiarizes you with the contents of the I²S Controller IP Core setup.

Table below shows the revision history of the installation guide.

Version	Date	Description
1.0	May 2015	First release

How to Contact SLS

For the most up-to-date information about SLS products, go to the SLS worldwide website at <http://www.slscorp.com>. For additional information about SLS products, consult the source shown below.

Information Type	E-mail
Product literature services, SLS literature services, Non-technical customer services, Technical support.	support@slscorp.com

<i>About this Guide</i>	<i>ii</i>
Introduction	ii
How to Contact SLS	ii
Software Installation	1
Installing I2S Controller IP Core	1
Step1: Preparing to Install.....	1
Step2: Welcome to the SLS I2S Controller IP Installation Wizard.....	1
Step3: License Agreement	2
Step4: Choosing Destination Location	3
Step5: Start Copying the Program Files	3
Step5: License Information.....	4
Step6: Finish Installation	4
Step7: SLS I2S Controller ReadMe.....	5

This Installation Steps guides the user through the installation process of SLS I²S Controller IP Core.



We assume that following software are installed on your pc.

- Windows 2000, XP
- Quartus II 8.1, Nios II EDS 8.1

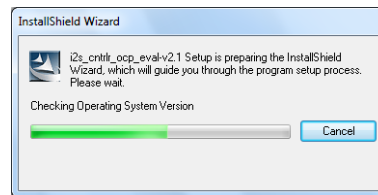
Installing I²S Controller IP Core

The I²S Controller IP Core is provided as a setup for using it in various designs. Following steps shows the installation procedure for the IP Core setup file on your system.

Step1: Preparing to Install

Double click on the **i²s_cntrlr_ocp_eval-v<IP Core Setup version#>.exe** file. It displays the message as shown in [Figure- 1](#).

Figure -1. Install SLS I²S Controller



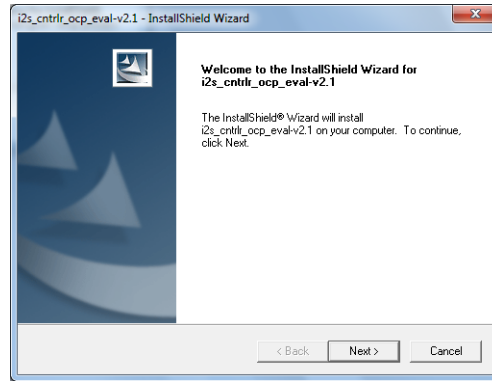
Step2: Welcome to the SLS I²S Controller IP Installation Wizard

Then the next window appears showing the message, '**Welcome to the SLS i²s_cntrlr_ocp_eval-v<IP Core Setup version#> Installshield Wizard**' appears as shown in [Figure- 2](#). There are three options available, '**Back**', '**Next**' and '**Cancel**'. Choose the correct option as per the requirement.

1. Choose '**Back**' to go to previous window.

2. Choose **'Next'** to continue the installation.
3. Choose **'Cancel'** to end the setup for installation. Selecting this option pops up a message window having options, **'Yes'** and **'No'**.
 - To continue the installation choose **'No'**.
 - To exit setup choose **'Yes'**.

Figure -2. Welcome SLS I²S Controller IP Setup Wizard



Step3: License Agreement

The setup shows a **“License Agreement”** window. Accept the agreement in order to continue with setup. Select **“I accept the terms of license agreement”** option after reading the License terms as shown in [Figure- 3](#).

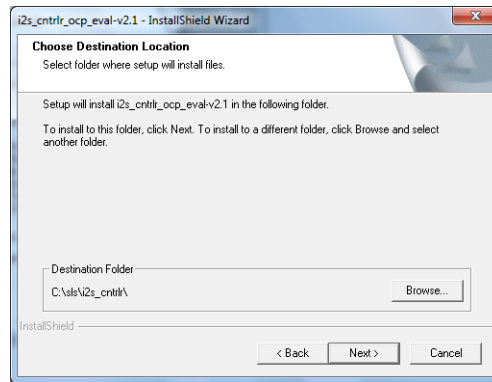
Figure -3. License Agreement



Step4: Choosing Destination Location

The “**Choose Destination Location**” window appears asking the installation directory for I²S Controller IP Core. See [Figure- 4](#). For installing to a different folder, click “**Browse**” button. Choose ‘**Next**’ to continue the setup.

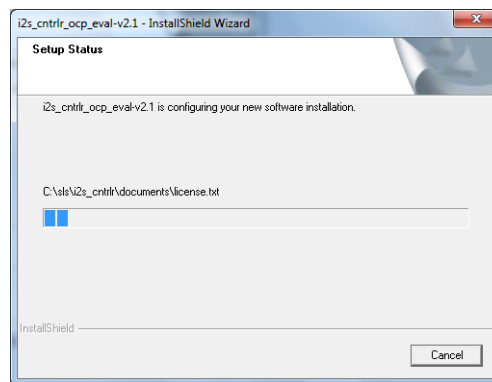
Figure -4. Choose Destination Location



Step5: Start Copying the Program Files

It starts copying the IP Core files to the directory selected. See [Figure- 5](#).

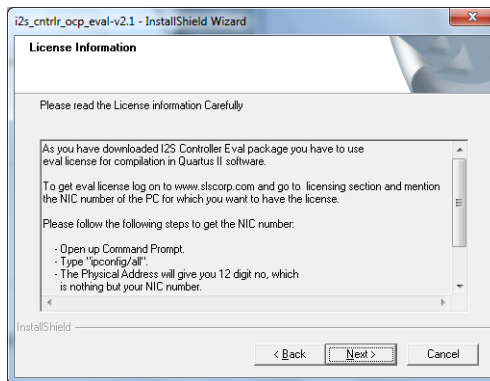
Figure -5. Setup Status



Step5: License Information

After copying the files, the “**License Information**” window explaining the steps to request the license for IP Core. See [Figure- 6](#). Choose ‘**Next**’ to go to finish window.

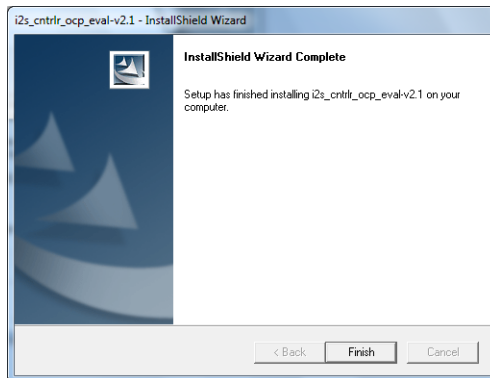
Figure -6. License Information



Step6: Finish Installation

As the installation completes, last window will appear as shown in [Figure- 7](#). Choose ‘**Finish**’ to exit from the installation window.

Figure -7. Installshield Wizard Complete



Step7: SLS I²S Controller ReadMe

After successful installation of the SLS I²S Controller IP Core, it opens the ReadMe file. See [Figure- 8](#).

Figure 8. SLS I²S Controller IP Core After Installation



To verify the proper installation of I²S Controller IP core, make sure that the installed IP Core directory structure is same as the directory structure specified in the ReadMe file.

[Table 1](#) lists I²S Controller IP Core installation directory content and their description. The default Windows installation directory is **c:\sls**.

Directory Name	Description of Contents
documents	Contains I ² S Controller User Guide, Tutorial and readme help files.
embedded example	Contains sample source code for applications with Nios II.
	Contains I ² S Controller configuration file.
hardware	Contains encrypted I ² S IP Core design files and ready to use reference designs for the core.

Table 1. Installed Directory Contents

Directory Name	Description of Contents
component	Contains encrypted I ² S IP Core design files.
ref_design	Contains ready to use reference designs NEEK kit (Cyclone III 3C25).